



ROLLING STALK CHOPPER



Economical, Effective Residue Management!!!

Buffalo ROLLING STALK CHOPPER

Prepare Fields – Conserve Moisture!!



Fast, efficient, one-pass seedbed preparation.

Features and Benefits

- Offers a simple, economical method for chopping standing stalks.
- A ground-driven tool designed for spring or fall preparation of crop residue.
- Eliminates the worries and hassles of U-joints, gearboxes, drive assemblies, hydraulic hook-ups, and PTO junctions.
- Simply hitch to your three-point, choose your ground speed and go!
- The chopping activity promotes warming and drying of the soil. In many instances, the field can be planted immediately following the chopping action.
- Performs best at speeds in excess of eight miles per hour, often doubling the ground speeds of other tillage tools.
- Two-row to sixteen-row models available.
- Adjustable reel mounting brackets allow angles to be changed to match the desired chopping action.
- Hardened-steel chopping blades.
- 7" x 7" rugged, heavy-duty toolbar.
- Larger machines available on folding toolbar.
- Reels feature greaseable 1 1/2" flange bearings with triple-lip seal.
- Optional bearing guards offer added protection from wrapping when operating in rye or other stubble.

Optional Equipment

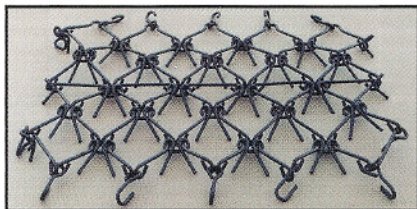
Harrows

Choice of harrows for additional field conditioning, smoothing, and spreading of residue.



Spike-Tooth Harrows

- For moderate residue levels.
- Available in three-bar or five-bar models.

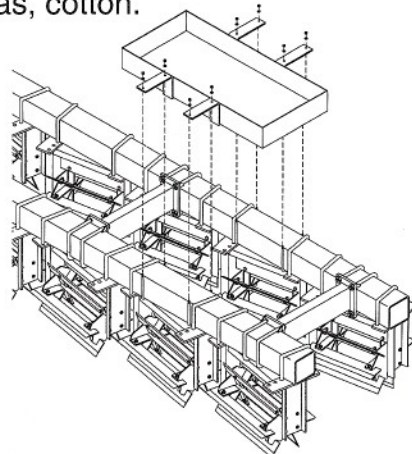


Chain-Link Harrows

- For high residue levels.
- Available in a variety of lengths.

Weight Box

Allows adding weight to aid in chopping tough residue, such as, cotton.



Rigid Models

- Single or double toolbar.
- On the front bar, each reel has eight 22" chopping blades.
- On the rear bar, each reel has six 22" chopping blades. (Eight-blade option available.)
- Fixed linkage between front and rear gangs.
- Designed to operate in no-till, minimum till, ridge till, or conventional fields.
- Two-row male seed corn eliminator model available.



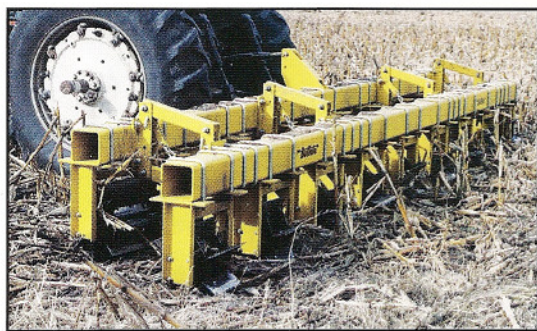
Single Bar, Rigid Model offers an economical means for fields requiring only minimal field preparation.



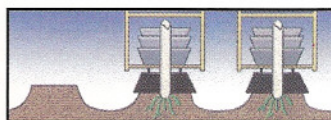
Double-Bar, Rigid Model — Designed to operate in no-till, minimum till, ridge till, or conventional fields.

Flex Models

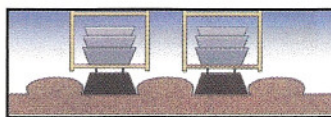
- Independent parallel linkage between front and rear gangs.
- Regular Flex Model has the front reels mounted on a single, continuous toolbar and the rear reels on a single continuous toolbar. It is designed to operate in ridge till or bedded fields.
- Hi-Flex Model has the front reels mounted on a single, continuous toolbar and the rear reels each mounted on its own individual toolbar. It works well in knocking down a cover crop. It is also more rock compatible.
- Regular Flex Model: front reels have eight 22" chopping blades per reel; rear reels have six 12" chopping blades per reel.
- Hi-Flex Model: front reels have eight 22" chopping blades per reel; rear reels have six 22" chopping blades per reel.



Regular Flex Model — Designed to operate in ridge till fields.



Front reels chop ridge stalks.



Back reels chop valley residue.



Hi-Flex Model — Designed as a more rock compatible unit; also works well when knocking down cover crops. Shown with optional bearing guards.

Buffalo ROLLING STALK CHOPPER

For Fast, Efficient, One-Pass Seed Bed Preparation.



Available in two-row to sixteen-row models, the rolling stalk chopper utilizes a rugged, heavy-duty toolbar. Larger models are available on a folding toolbar.



Adjustable reel mounting brackets allow you to choose the chopping action needed. More angle for more aggressive chopping action; less angle for less aggressive chopping action.

Seed Corn Chopper

Two-Row Seed Corn Male Row Eliminator

- Chops and destroys the male rows, allowing more growth-stimulating sunlight to the female plants.
- Soil nutrients and water formerly utilized by the male plants are now available for absorption by the seed-producing female plants.



Two-Row Seed Corn Male Row Eliminator Chopper.



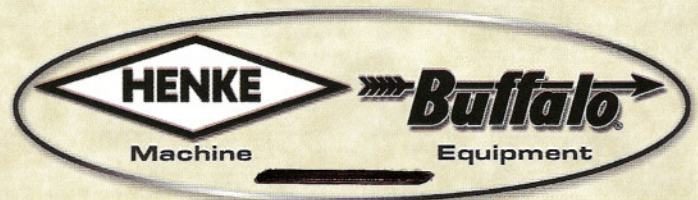
Optional six-blade 12" reel on flexible linkage thoroughly cleans up the row middle.



(Specifications and design subject to change without notice.)

Henke•Buffalo offers a full line of farm and livestock equipment.

See your dealer for details.



Henke Machine • Buffalo Equipment

2281 - 16th Avenue, P.O. Box 848
Columbus, Nebraska 68602-0848

Phone: 402-562-0014

Toll-Free: 800-228-1405

Fax: 402-562-5530



Printed in U.S.A.
Lit-CH-06/02